



Crawler Access Platforms

IM R 13 | IM R 15 | IM R 19



www.lmergroup.com



IM R 13



Wired control panel - friendly to use

Benefits

- ✓ Removable wired control panel for remote control of the platform during translation.
- ✓ Electro-hydraulic controls: efficiency and safety for the operators.
- ✓ Turret slewing 360° (not continuous): aerial accessibility in any work situation.
- ✓ Compact overall sizes and reduced stabilization footprint (2.7 x 2.8 m).
- ✓ Aluminium platform 1.4x0.63x1.10 m.
- ✓ Reduced weight (1,460 kg) for maximum transportability.
- ✓ Hydraulically adjustable tracks width (optional): higher stability and greater traction to move around the building site and rough terrain.

Standard equipment

- Emergency hand pump
- Cylinder holding valve
- Hour meter
- Momentum device
- Hydraulic Jib
- Rubber tracks
- 230V - 16 A electro-pump for indoor use
- Air / Water outlet in the platform
- 230V - 16 A outlet in the platform
- Honda engine GX 270 4,6 kW
- Removable wired control box

Optionals

- 12V emergency electro-pump
- Hydraulically adjustable tracks width
- Automatic levelling outriggers
- Working light in the platform
- Non-marking rubber tracks
- Oversized outrigger pads (ø 350 mm)
- Wireless radio-control box



Slewing 360° (not continuous):
outstanding aerial accessibility
in any work situation

Momentum device for improved
safety and performance

Working height	m	13
Platform height	m	11
Side outreach	m/kg	5,2 / 200 – 6,1 / 120 – 6,7 / 80
Slewing	degrees	360° (not continuous)
Basket dimensions	m	1,40 x 0,63 x 1,10
Transport length	m	3,5 / 2,9 (without basket)
Transport width	m	1,40 / 0,79 (without basket)
Stowed height	m	2,00
Overall outrigger footprint	m	2,7 x 2,8
Driving speed	km/h	1,5
Gradeability	degrees	17° (30%)
Platform capacity	kg	200
Petrol engine	Honda GX270 – 4,6 kW (6,2 HP) /3000 rpm	
Total weight of the machine	kg	1460



Endothermic power pack duly guarded for improved safety



Magneto-thermic switch panel and power line inlet



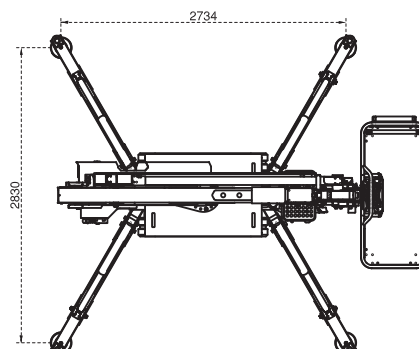
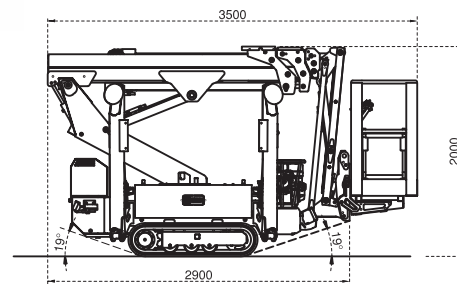
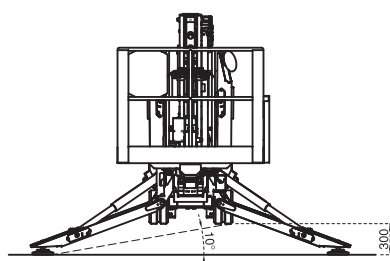
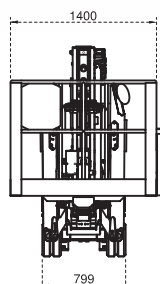
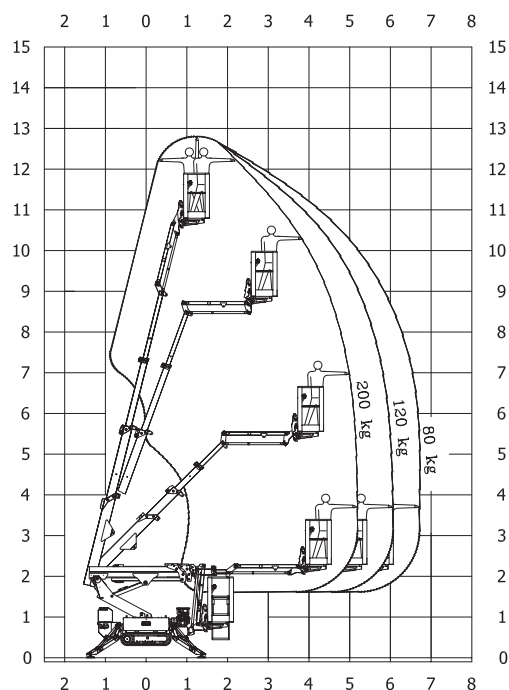
Ground control panel easy to access and protected inside frame guards



799 mm



Compact dimensions for enhanced accessibility in any working site.



IM R 15



Benefits

- ✓ Hydraulically adjustable tracks width: more stability and traction to move around the building site or rough terrain
- ✓ Removable wired control panel for remote control of the platform during translation
- ✓ Contemporary and proportional electro-hydraulic controls: efficiency and safety for operators
- ✓ Slewing 360° (not continuous): outstanding aerial accessibility in any work situation
- ✓ Basket rotation $\pm 75^\circ$: complete placement on working site in any condition
- ✓ Compact size, with limited overall outrigger footprint
- ✓ Engine guarded for safety and working protection
- ✓ Aluminium platform 1.40x0.70x1.10 mts.
- ✓ Innovative design with fully enclosed structure

Standard equipment

- Emergency hand pump
- Cylinder holding valve
- Hour meter
- Momentum device
- Load cell
- Hydraulic Jib
- Rubber tracks
- Hydraulically adjustable tracks width
- 230V - 16 A electro-pump for indoor use
- Air / Water outlet in the platform
- 230V - 16 A outlet in the platform
- Removable wired control box

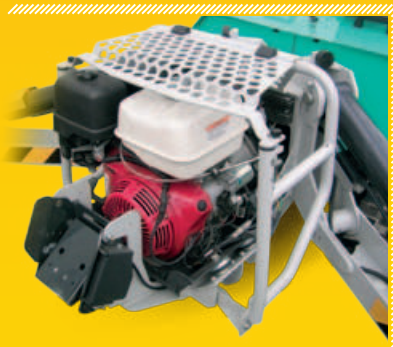
Optionals

- Wireless radio-control box
- Automatic levelling outriggers
- 12 V emergency electro-pump
- Non-marking rubber tracks
- Oversized outrigger pads (ϕ 350 mm)
- Double speed traction kit
- Working light in the platform

Working height	m	15
Platform height	m	13
Side outreach	m/kg	8.70 / 80 - 7.80 / 120 - 6.70 / 200
Slewing	(°)	360° (not continuous)
Basket dimensions	m	1.40 x 0.70 x 1.10
Transport length	m	4.86 / 4.21 (without basket)
Transport width	m	Min 0.79 / Max 1.06
Height in stowed position	m	Min 1.99 / Max 2.10 (with stabilizers in position)
Overall outrigger footprint	m	2,910 x 2,980
Driving speed	km/h	0 - 2
Gradeability	(°)	25°
Platform capacity	kg	200
Petrol engine		Honda GX390 - 11 HP 3600 rpm
Diesel engine		Yanmar L100N - 9.9 HP 3600 rpm
Total weight of the machine	kg	1980



Rotating turret hosting hydraulic components of the platform's aerial section



Engine guard enable high accessibility and impact's protection

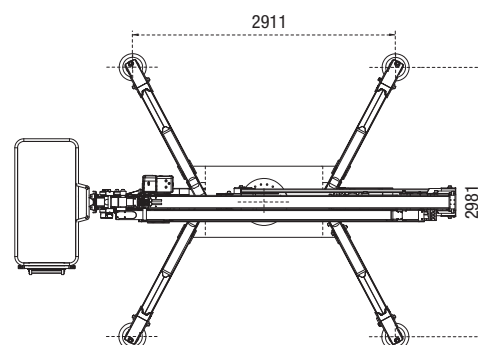
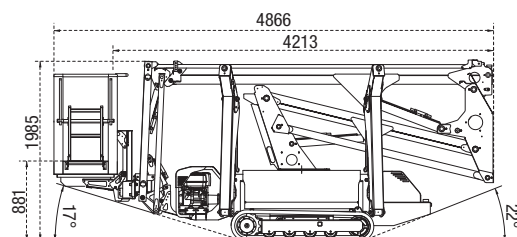
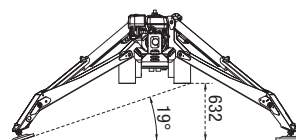
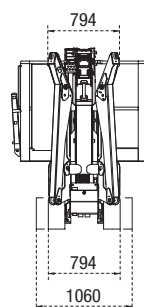
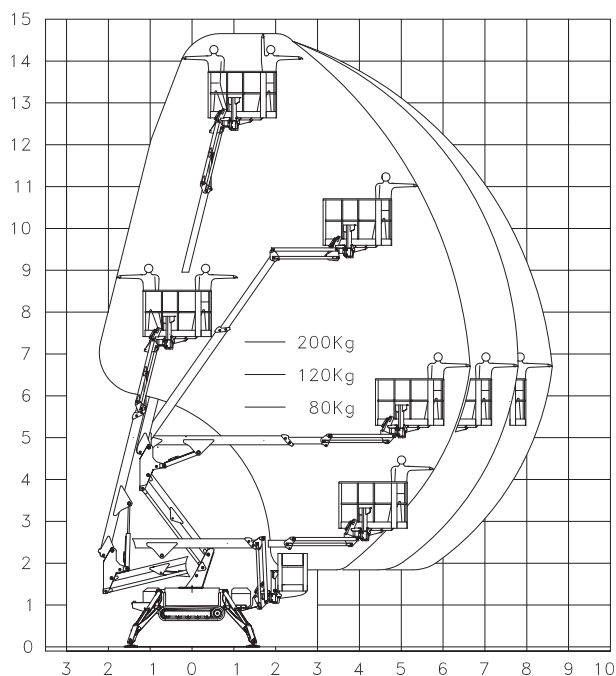


Emergency hand pump with ease of access and operation.



Sturdy stabilization with reduced area and innovative design

Operator's friendly ground control panel



IM R 19



Benefits

- ✓ Hydraulically adjustable tracks width: more stability and traction to move around the building site or rough terrain
- ✓ State-of-the-art removable control panel: fast and versatile use of the machine
- ✓ Proportional and simultaneous electro-hydraulic controls: efficiency and safety for operators
- ✓ Automatic outrigger levelling: maximum easiness of use
- ✓ Slewing 360° (not continuous): outstanding aerial accessibility in any work situation
- ✓ Basket rotation $\pm 75^\circ$: complete placement on working site in any condition
- ✓ Compact size, with limited overall outrigger footprint
- ✓ Engine guarded for safety and working protection
- ✓ Aluminium platform 1.40x0.70x1.10 mts.
- ✓ Innovative design with fully enclosed structure

360°

Slewing 360° (not continuous): outstanding aerial accessibility in any work situation

Momentum device for improved safety and performance

Standard equipment

- Automatic outrigger levelling
- Emergency hand pump
- Cylinder holding valve
- Hour meter
- Momentum device
- Load cell
- Hydraulic Jib
- Rubber tracks
- Hydraulically adjustable tracks width
- 230V - 16 A electro-pump for indoor use
- Air / Water outlet in the platform
- 230V - 16 A outlet in the platform
- Removable wired control box
- Double speed traction

Optionals

- 12 V emergency electro-pump
- Non-marking rubber tracks
- Oversized outrigger pads ($\varnothing 350$ mm)
- Wireless radio-control box
- Working light in the platform

Working height	m	19
Platform height	m	17
Side outreach	m/kg	9,80 / 80 - 8,50 / 120 - 7,00 / 200
Slewing	(°)	360° (not continuous)
Basket dimensions	m	1,40 x 0,70 x 1,10
Transport length	m	5,3 / 4,63 (without basket)
Transport width	m	Min 0,79 / Max 1,06
Height in stowed position	m	Min 1,99 / Max 2,10 (with stabilizers in position)
Overall outrigger footprint	m	2,910 x 2,980
Driving speed	km/h	0 - 2
Gradeability	(°)	25°
Platform capacity	kg	200
Petrol engine		Honda GX390 - 11 HP 3600 rpm
Diesel engine		Yanmar L100N - 9,9 HP 3600 rpm
Total weight of the machine	kg	2300



Emergency hand pump with ease of access and operation.



Basket mounting system designed for easiness of assembly.



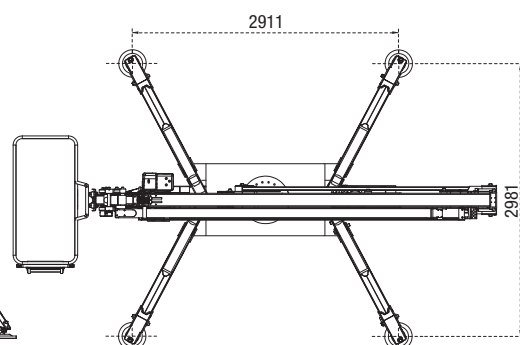
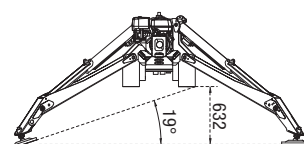
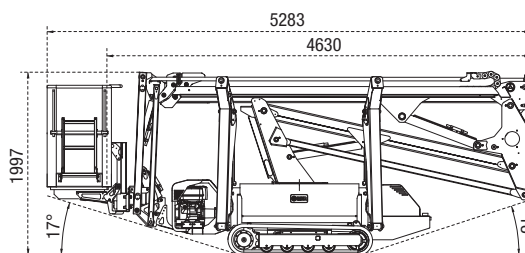
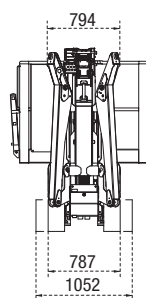
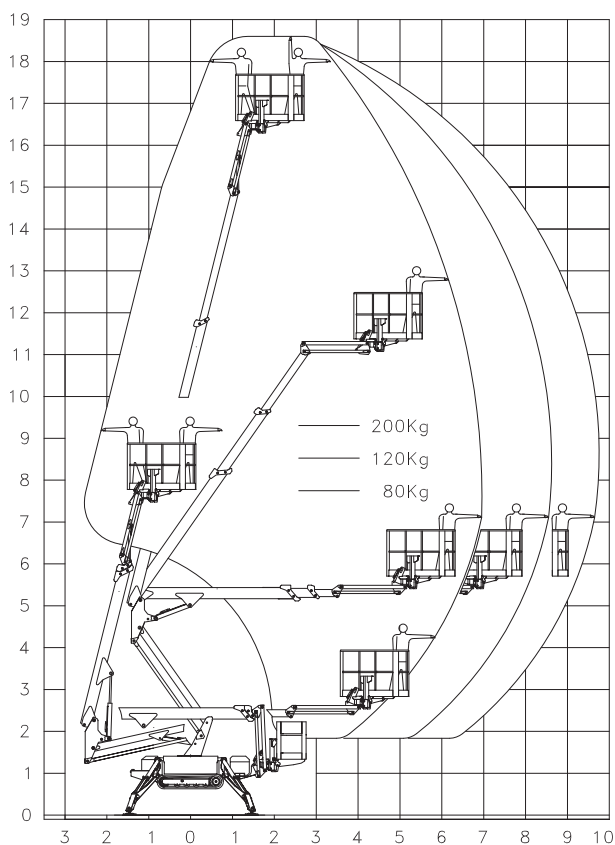
Compactness of the jib ass'y hosting both the load cell and basket rotation system.



Rugged engine guard for improved protection



Compact dimensions for enhanced accessibility in any working site.





IMER International S.p.A.

Access Platforms Division

Via San Francesco d'Assisi 8 - 46020 Pegognaga (MN) Italy

Tel. +39 0376 554011 - Fax +39 0376 559855

www.imergroup.com