

# RT 1070

## ROUGH TERRAIN CRANE 70 T CAPACITY



- ▶ 70 t lifting capacity
- ▶ 32,4 m max boom length
- ▶ 35,0 m max tip height main boom
- ▶ 55 m / 49 m / 43 m max tip height with additional 20 m / 14 m / 8 m lattice jib

### EASY TO HANDLE

Easy transportability and maneuverability:

- Compact: only 3.00 m width
- 3 steering modes
- Automatic / manual shift modes

### HIGH PERFORMANCES

- Superior load charts and tip heights
- 4-sections hydraulic boom with 2 extension modes: strength, stability
- Low energy consumption Cummins engine 168 kW (V) / 164 kW (IIIA)
- 23.5 (26.5) tires

### FULL CONTROL

- 7" full-color display
- Ergonomic electro-proportional joysticks with adjustable responsiveness to operator preferences

### GREAT COMFORT, EXCELLENT VISIBILITY

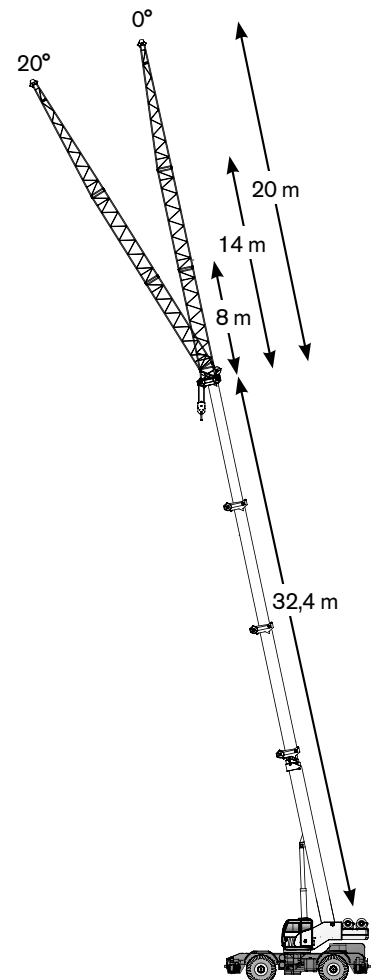
- Extra wide and tiltable cabin with large glass surface. No blind spots.
- 3 working area LED lights outside the cab included

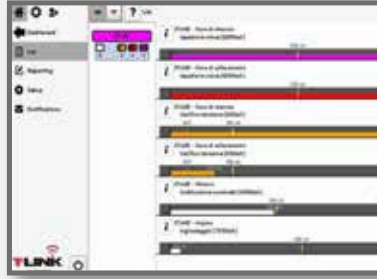
### TOP RELIABILITY

- High quality assured, with minimal service needs
- Low operating cost
- T-Link Telematics Platform included

### WIDE OPTIONS CHOICE

- Additional lattice jibs of 20 m / 14 m / 8 m and single sheave
- Auxiliary winch
- Up to 4 cameras for enhanced visibility
- Radio remote control





- Cost savings and increased productivity
- Better management of maintenance and technical assistance
- Fleet control with Geofence
- Improved machine management, statistics and real-time data

## KEY APPLICATIONS

The versatility of our rough terrain cranes allow us to cater for a number of applications, including:



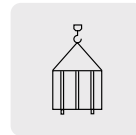
OIL & GAS



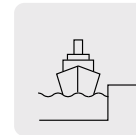
CONSTRUCTION



MINING



SHIPPING  
& LOGISTICS



SHIPYARDS



POWER  
PLANTS



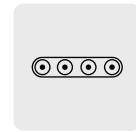
ROADS & RAILWAYS  
CONSTRUCTION



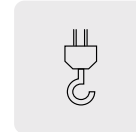
MILITARY



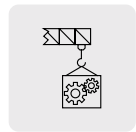
MATERIAL  
HANDLING



MOBILE  
EQUIPMENT  
COMMISSIONING



GENERAL  
LIFTING  
APPLICATIONS



MAINTENANCE  
WORKS



## TEREX ROUGH TERRAIN CRANES

**Terex Italia Srl**

Via Cassoletta, 76 - Fraz. Crespellano  
40053 Valsamoggia (BO)  
Italy

Ph: +39 051 6501011

Email: [mktg.cranes@terex.com](mailto:mktg.cranes@terex.com)

[www.terex.com/rough-terrain-cranes](http://www.terex.com/rough-terrain-cranes)



Brochure Reference: RT-FL-M-E-RT 1070-01/23

**WORKS FOR YOU.™**